

American Sign Language 1 & 2

COURSE HIGHLIGHTS:

Over 750 signs videos by Deaf individuals who use ASL every day!

These new videos feature signs and dialogs between Deaf individuals and are paced to allow learners to follow and to mirror the signs.

Opportunities for Practice

Student experience using the language with spiraling activities.

ACTFL Standards

Developed to meet both ACTFL and state standards.

Etiquette

Covers everything students need to understand about deaf etiquette.

Expertise

Deaf educators, fluent in ASL and English, serve as subject matter experts. They consult on course development, accuracy, instructions and respectful depiction of the Deaf community and Deaf culture. They teach American Sign Language and hold Master's degrees from Gallaudet University.

**Inspiring
Students,
Empowering
Educators.**

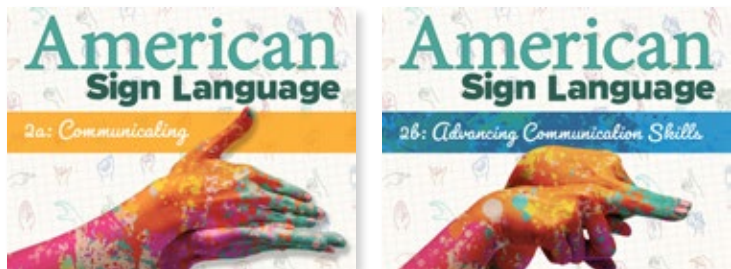


AMERICAN SIGN LANGUAGE 1



The predominant sign language of Deaf communities in the United States, American Sign Language, is complex and robust, consisting of signs made with the hands, facial expressions, and body postures. *American Sign Language 1* will introduce students to the language, grammar, and phonology, so that they can start communicating right away. Importantly, they will explore Deaf culture – social beliefs, traditions, history, values and communities influenced by deafness and which use sign language as the primary means of communication.

AMERICAN SIGN LANGUAGE 2



In *American Sign Language 2*, students will build on the skills they learned in *American Sign Language 1* to expand their knowledge of the language and their understanding of the world in which it is frequently used. Students will grow their sign vocabulary and improve their ability to interact using facial expressions and body language. Students will also learn current trends in technology within ASL and explore potential education and career opportunities.

Why Choose eDynamic Learning?



HASSLE-FREE
LMS INTEGRATION



LEARNING WITH
UNLIMITED FLEXIBILITY



FLEXIBLE TEACHER
IMPLEMENTATION



INCLUSIVE OF ALL
TYPES OF LEARNERS



@edynamiclearning



edynamiclearning



@edynamiclearn

Contact us to learn more:
hello@edynamiclearning.com
www.edynamiclearning.com

1.877.585.2029