



**Purposeful**

**Relevant**

**Flexible**

# Professional Development

## A Partner in Your Success

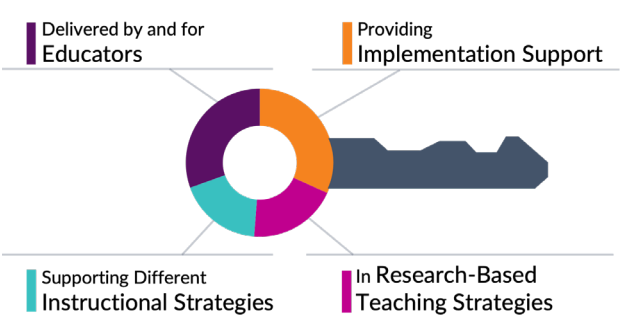
As a teacher-founded company, our mission at eDynamic Learning is to partner with you to ensure you get the most important ROI — your **Return on Instruction**. We provide personalized professional development experiences to ensure you are equipped with the most relevant, research-based, teaching methods and strategies.

As educators, we know that **relevant** professional development starts with workshops that you actually want to be in - and that are designed to be **purposeful** to meet each of your unique needs and goals and recognizes your expertise. You want workshops that help you learn, grow, and even try out new instructional strategies that can be implemented in **flexible** ways.



# Keys To Success

We know that the key to any successful curriculum adoption is purposeful and relevant professional development. And research shows that when teachers feel supported, engaged, and understand the new curriculum, it results in success. This can make all the difference in your student’s engagement, motivation, and achievement. Our transformative PD will be delivered by educators who can provide a wide-range of implementation support. You’ll be empowered to successfully implement eDynamic Learning courses using different instructional strategies within various instructional settings, using researched-based teaching strategies.



## CTE Professional Development Series Bundle

eDynamic Learning supports Perkins’ definition of professional development through a succession of three workshops. Teachers will collaborate and learn best practices to support their students effectively in CTE through job-embedded, data-driven, and classroom-focused workshops. Sessions will help strengthen teachers’ understanding of the curriculum, resources, and the instructional strategies.

### Two Professional Development Bundle Options to Choose From

CTE Professional Development Series Bundle On-Going Professional Development <i>*for up to 25 educators</i>	
<b>On-Site EDLPD011A</b>	<b>Virtual EDLPD011B</b>
1 - Implementation Essentials*	1 - Implementation Essentials Online Self-paced Course*
1 - Elevated Instructional Strategies	3 - Virtual Workshops*
1 - Job-Embedded Coaching Sessions	3 - Job-Embedded Coaching Sessions

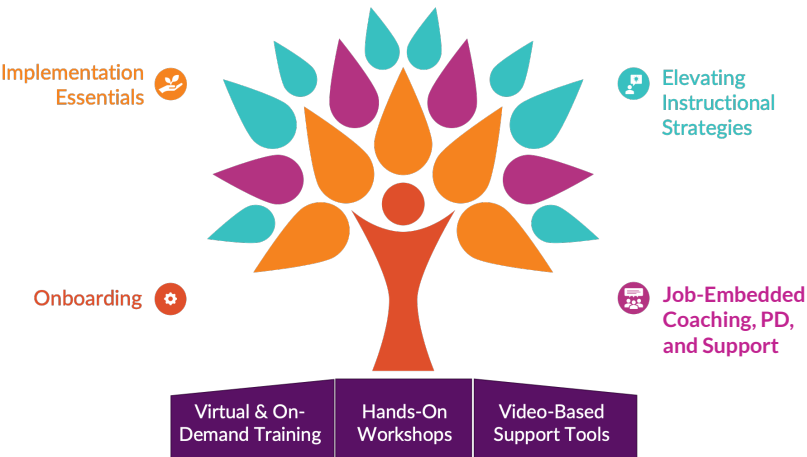
## Thoughtfully Customized Professional Development Planning

After working with our support team to onboard your students, we start with a plan. We’ll work together on creating your professional development implementation strategy specifically designed to support your district’s needs.

### Collaborative District Needs Planning

Your eDynamic Learning team is there with you every step of the way. We begin with our **Collaborative District Needs Planning** meeting where we work with you to carefully plan your custom professional development experiences based on your goals and requirements. This is complimentary and takes place prior to the Implementation Essentials Workshop.

#### Supporting You a Variety of Ways



# Professional Development Options

## Implementation Essentials Workshop: Developing a Strong Foundation

Our professional development series begins with our **Implementation Essentials Workshop** to provide you with the foundational skills you need to start implementing eDL curriculum in your classes on Day 1. You'll interact live with the curriculum and participate in action-oriented activities, so you can hit the ground running. Exploration includes how to navigate the courses, understand the lesson structure, digital features, components for instructional support and teacher resources. This includes formative and summative assessments, rubrics, and the basics for customization.

Implementation Essentials Brick & Mortar School		Implementation Essentials Online School/Program		Implementation Essentials Instructional Services*		Implementation Essentials Online Course
● On-Site EDLPD01A	● Virtual EDLPD01B	● On-Site EDLPD02A	● Virtual EDLPD02B	● On-Site EDLPD03A	● Virtual EDLPD03B	Self-Paced EDLPD01C

\* In the Instructional Services workshop, facilitators will learn more about their role and how they will support their students on a day-to-day basis and interact with the state-certified virtual instructor who will guide, monitor and grade student work.

## Elevating Instructional Strategies

The next step in our professional development series offers schools a variety of options to integrate the curriculum with best practices. Our **Elevating Instructional Strategies** options give educators the skills and knowledge to hone in on specific instructional methods that make sense for their classroom or district's needs.

Elevating Instructional Strategies Blended Learning		Elevating Instructional Strategies Project-Based Learning		Elevating Instructional Strategies Differentiated Instruction	
<ul style="list-style-type: none"> <li>○ Share the various blended learning models</li> <li>○ Deconstruct blended learning pedagogy and research</li> <li>○ Evaluate and explore the benefits and strategies to support district initiatives</li> <li>○ Uncover how to use eDL resources for blended learning</li> <li>○ Practice methods through collaborative activities with lessons</li> </ul>		<ul style="list-style-type: none"> <li>○ Clarify the benefits of PBL</li> <li>○ Brainstorm ideas for projects that integrate the use of digital tools</li> <li>○ Experience PBL strategies that foster students' thinking, teach technology skills, scaffold project planning, and facilitate project presentations</li> <li>○ Learn how to develop project rubrics and provide meaningful feedback</li> <li>Plan project-based lessons</li> </ul>		<ul style="list-style-type: none"> <li>○ Construct an understanding of differentiation to support student's learning styles, levels of readiness, and interests</li> <li>○ Examine strategies to differentiate eDL courses, assignments, and grading through built-in tools, customization, and settings features to best support special populations for acceleration, IEP Plans, 504 Plans, ELL students, and students with special needs</li> </ul>	
● On-Site EDLPD04A	● Virtual EDLPD04B	● On-Site EDLPD05A	● Virtual EDLPD05B	● On-Site EDLPD06A	● Virtual EDLPD06B

## Job-Embedded Coaching, Professional Development, and Support

Ongoing professional development is essential for continued success and increased academic achievement. Through our **On-going Coaching, Professional Development, and Support** we can provide you with a wide variety of options to support you throughout the school year.

Job-Embedded Coaching Focus Walks		Job-Embedded Coaching Modeling Lessons		Job-Embedded Coaching Co-Planning & Co-Teaching		Job-Embedded Coaching Observation & Feedback	
● On-Site EDLPD07A	● Virtual EDLPD07B	● On-Site EDLPD08A	● Virtual EDLPD08B	● On-Site EDLPD09A	● Virtual EDLPD09B	● On-Site EDLPD010A	● Virtual EDLPD010B

\*In addition to the four options listed above, districts have the ability to customize workshops to include a variety of elements from several concepts above working directly with their eDynamic Learning Professional Development Specialist.

As educators, we celebrate your success and take professional development seriously. We want to ensure you feel excited and empowered to implement your new eDL curriculum through **relevant, purposeful, and flexible** professional development. We look forward to being your partner now and in the years ahead in helping you grow and produce a strong ROI - **Return on Instruction!**

● Workshop to be delivered onsite for up to 6 hours. \*25 participants maximum.

● Virtual training delivered in up to 3 hours blocks.



#### **Engaging & Friendly Interface**

Each course offers a consistent, dependable, user-friendly design.



#### **Hassle-Free LMS Integration**

Compatible with your current learning management system.



#### **Flexible Teacher Implementation**

A large variety of teacher resources and course customization options.



#### **Inclusive of All Types of Learners**

Courses meet Web Content Accessibility Guidelines (WCAG 2.0 AA).



#### **Responsively Designed**

All courses work on all devices, including smartphones, laptops or desktops.

## **Contact Us to Learn More**

1.877.585.2029

[hello@edynamiclearning.com](mailto:hello@edynamiclearning.com)

[www.edynamiclearning.com](http://www.edynamiclearning.com)